

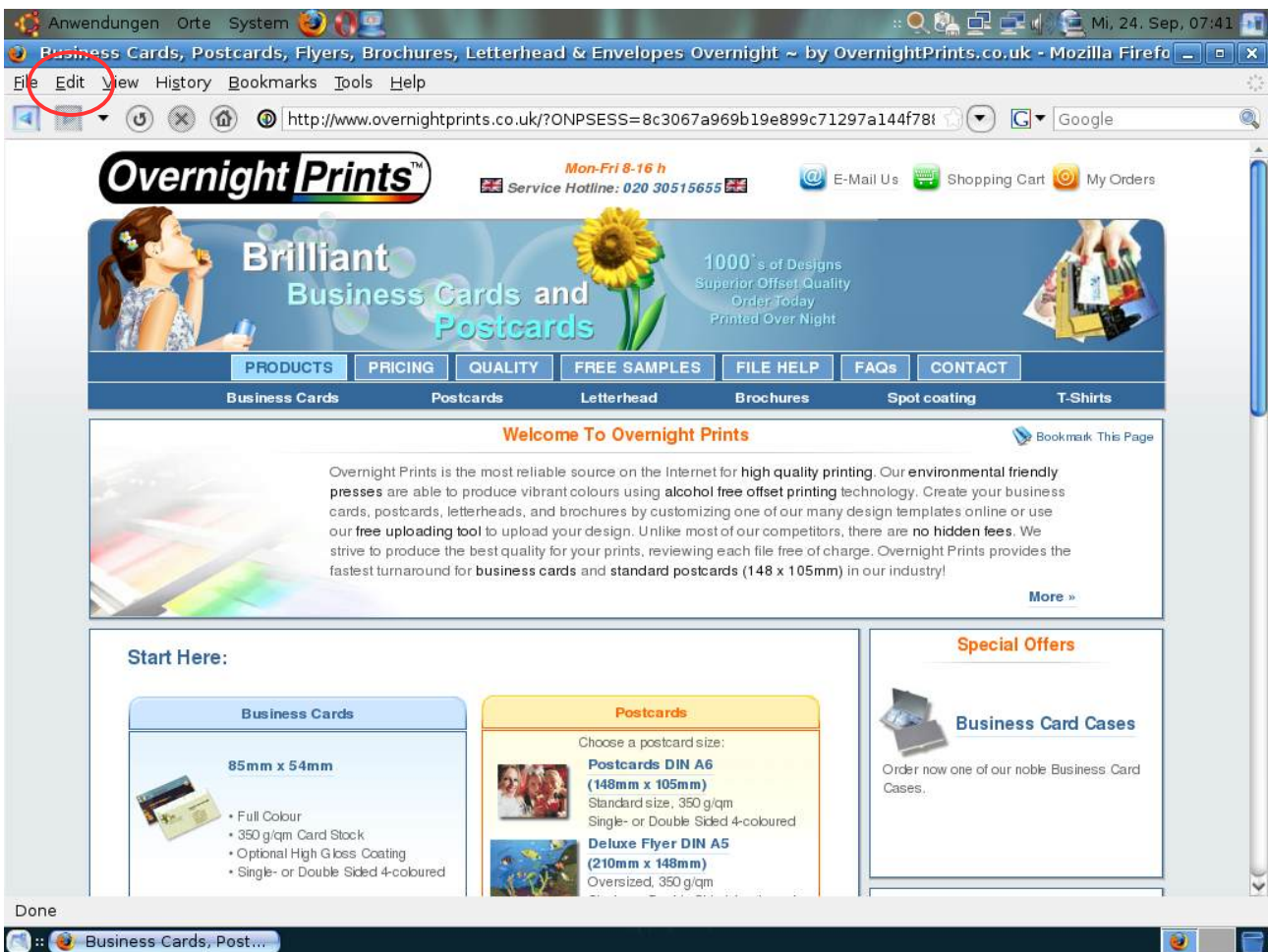
Explorer - Configuration

configuration example "Mozilla Firefox Browser":

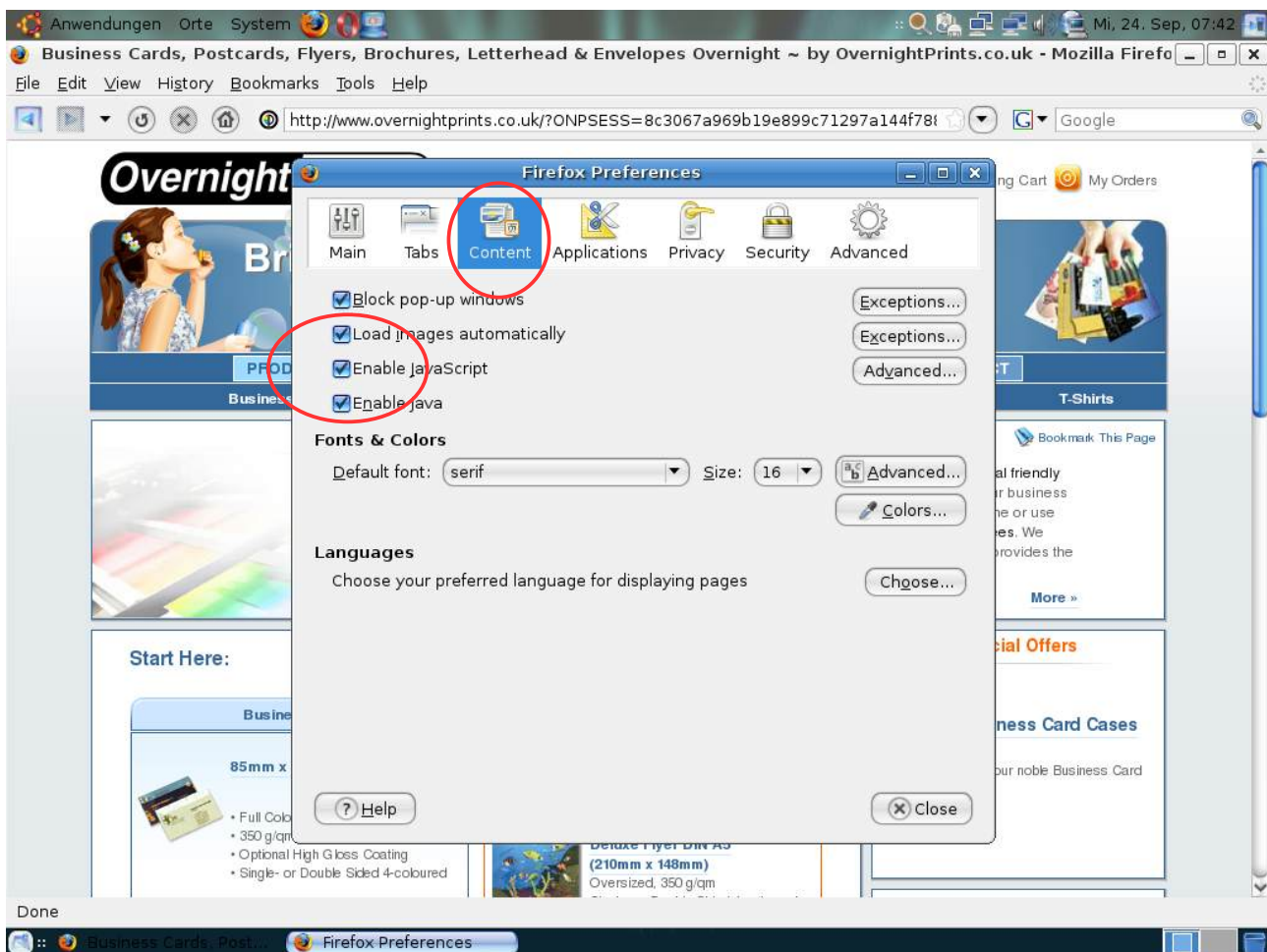
- pay attention to the little differences between "Mozilla Firefox" under different operating systems there are several menu structures (so called "tabs")

MacOS / OpenSuse / Ubuntu & Mozilla Firefox:

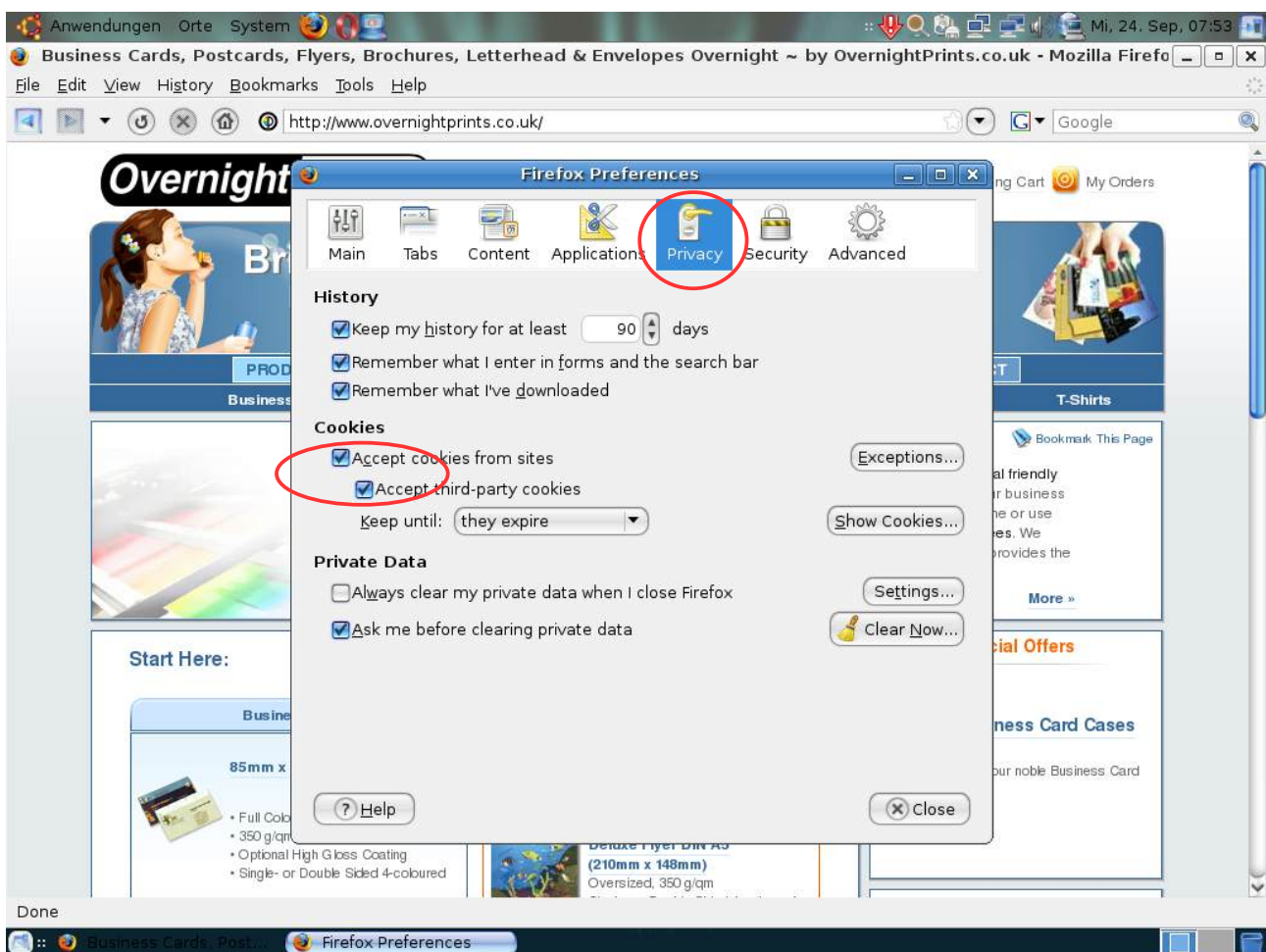
- start the browser
- click on the menu "Edit":
choose in it the undermost tab "Options" or "Preferences" or sometimes "Properties"



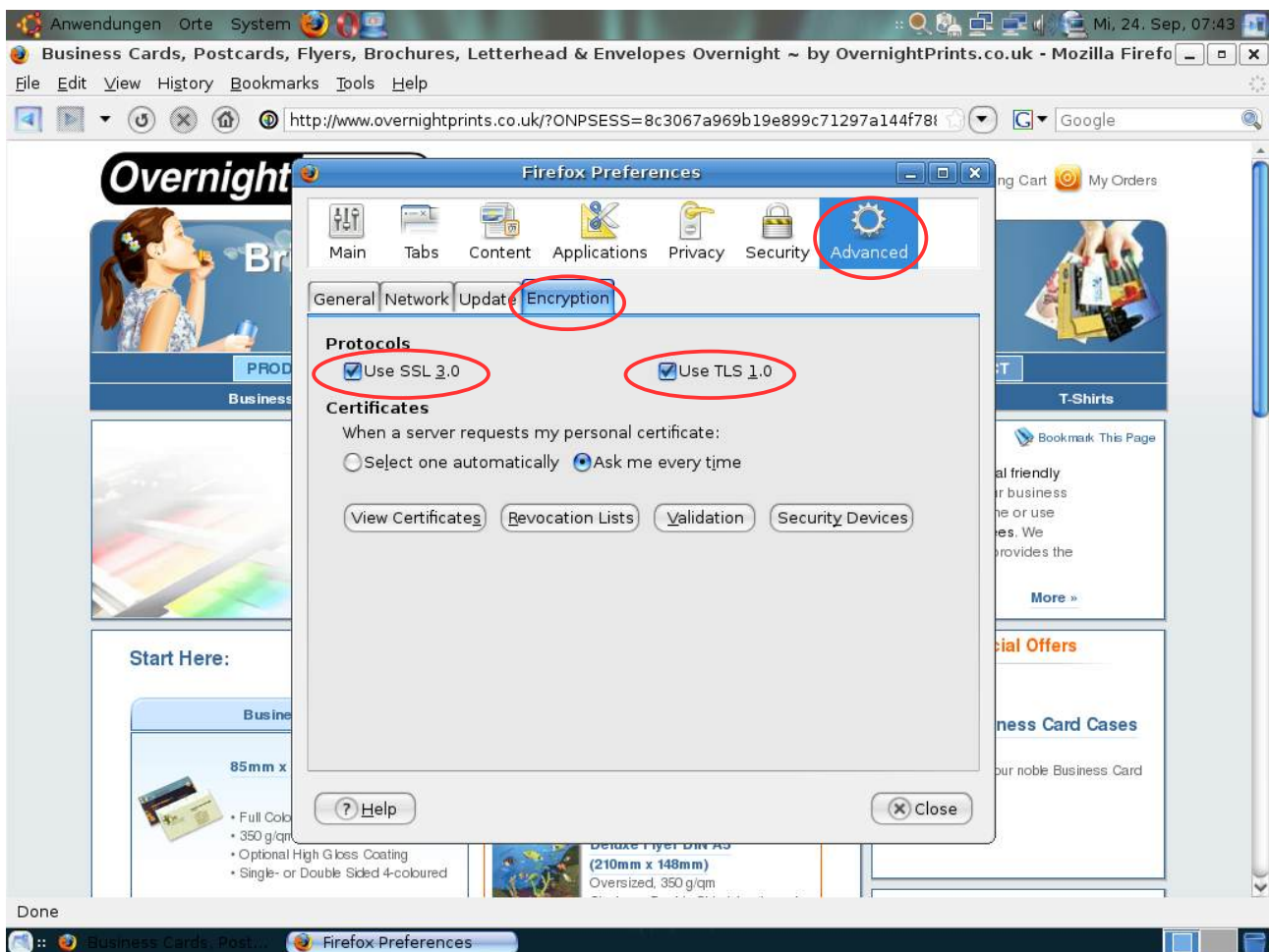
- menu of "Firefox Preferences":
please choose "Content" >> enable "Load images automatically", "Java" & "JavaScript"



- menu of the "Firefox Preferences ":
please choose "Privacy" >> enable "Accept cookies from sites"



- menu of the "Firefox Preferences":
choose "Advanced" >> "Encryption" >> enable "SSL 3.0" & "TLS 1.0"



Farheap GmbH
Germany

www.overnightprints.co.uk



User Documentation

stand: 28. August 2008

advise for licences

browsers:

Konqueror
Mozilla Firefox
Microsoft Internet Explorer
Netscape
Opera
Safari

operating systems:

Linux
MacOS
Ubuntu ("Kubuntu" or "Xubuntu")
UNIX

The products casual have different license-types! This certain by(depends on) fabricator! Please read there licence rules before use some of these products!!!

Have a lot of fun by ordering, your "Farheap"-team!